

KWK

Directly connected with a drum type. Motor-driven grease pump.

KSPN1000

You can choose one from large varieties, 22 types!

General Description

This motor-driven type lubricating system high performance pump directly connects with 200Lit drum.

This allows high pressure discharge. By using with single-line/dual-line measuring valves of the central lubricating system, It can lubricate at each lubricating point with fixed amount and with zero waste.

Composition

KSPN1000 is a compact motor-driven type lubricating pump which connects with a drum. This pump uses a double-plunger system (which has an suction plunger and discharge plunger, and no use for check valve) so this pump does not get affected by dust and strong trapped air. Also agitator ensures high efficiency of grease discharge at suction area.

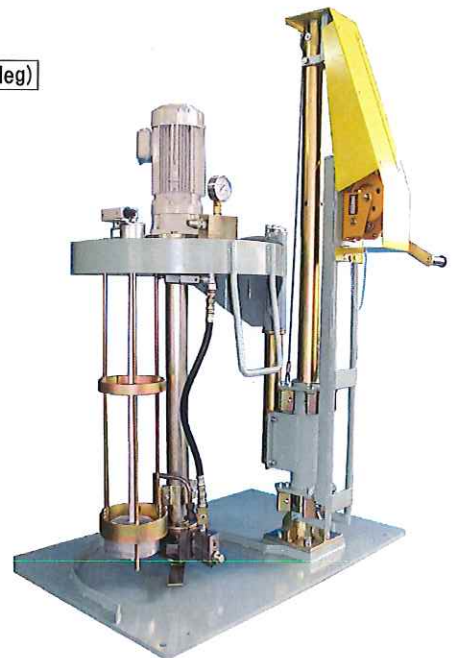
Main usage

- General industrial machines
- Iron steel facilities
- Construction machines
- Crane facilities

Hanging type (With an independence leg)



Manual lift type

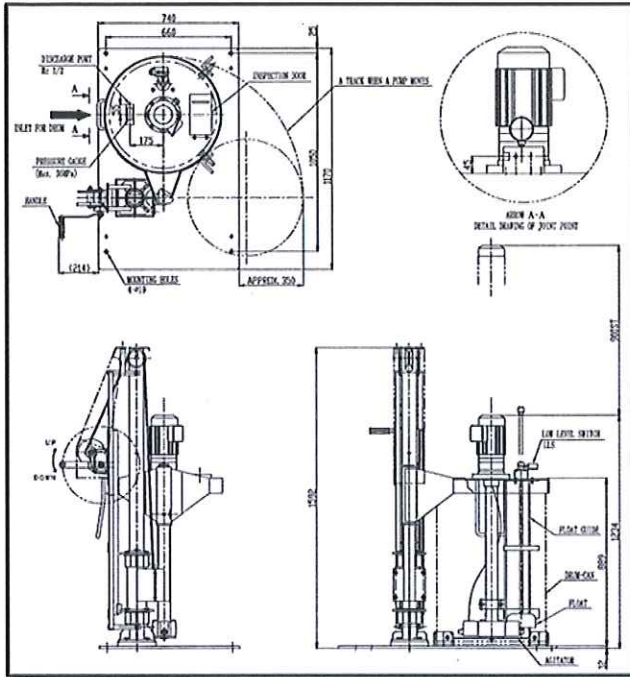


Could use for dual-line, single-line and grease gun!

Also could choose (A supply drum•A type with a reserve drum setting position)

KOWA CORPORATION

Lift type measurement



KSPN1000S-R

For single-line With manual lift
(Single drum)

This pump is with a manual lift to enable to exchange a drum easily. This has only one piping and for single-line system, therefore good for a medium-scale lubricating system.

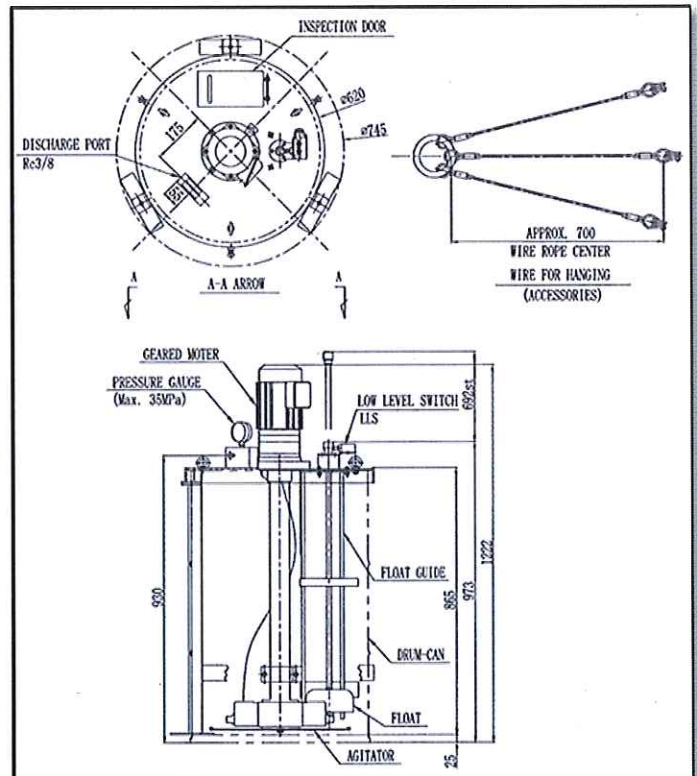
Hanging type measurement

KSPN1000S-T

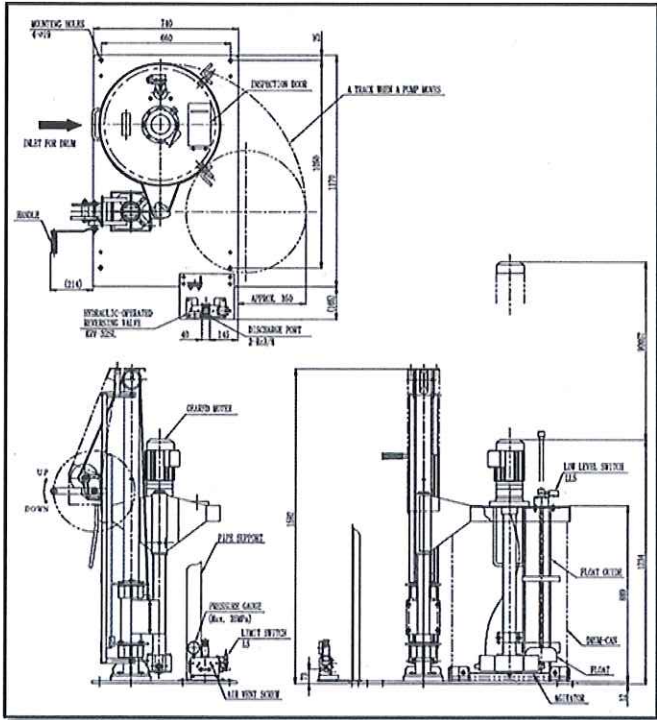
For Single-line

This pump is with an independence leg, and you exchange a drum by lifting a pump.

At where you do not need a lift type, this low-cost lift type would be good.



Lift type measurement



KSP N1000DS-R

For dual-line • With manual lift
(Single drum)

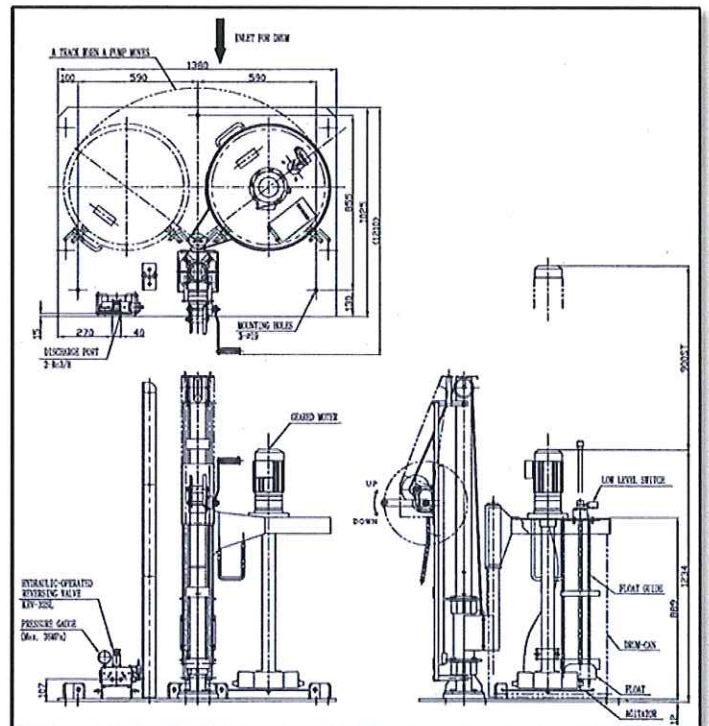
You can easily exchange a drum with
this pump.

On base, there is a reversing valve
for dual line. This pump is good for
a large-scale lubricating system.

KSP N1000SD-R

For dual-line • With
manual lift
(Double drum)

You can set two drums on pump's
base. So even though one drum's
grease gets empty, you can
exchange the drum easily and it
does not take long time.

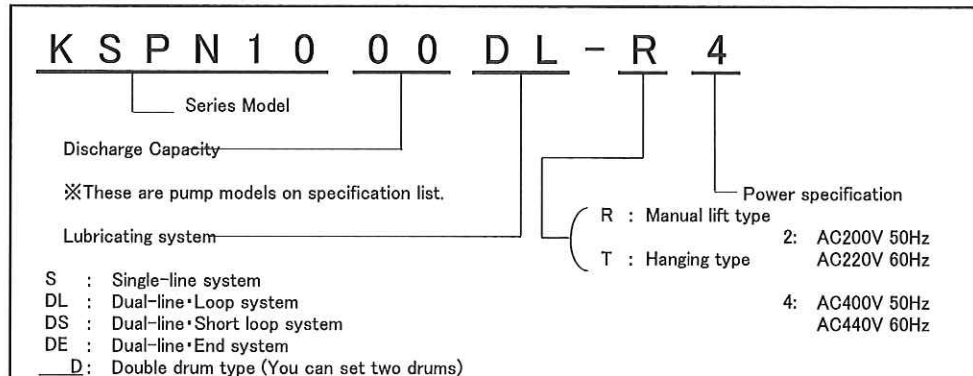


KOWA CORPORATION

Specification

| | | | | | | |
|--------------------------------------|--|--|---------|---------|---------|---------|
| Spec ificat ion for each | Pump model | 1001 | | | 1002 | |
| | Discharge capacity (cm ³ /min) 50/60Hz | 29/36 | | | 59/71 | |
| | Motor(kW) | 0.4 | | | 0.4 | |
| | Weight(Manual lift type) | 200kg(A drum is not included) | | | | |
| | Weight(Hanging type) | 65kg(A drum is not included) | | | | |
| | Pump model | 1003 | 1004 | 1005 | 1006 | 1007 |
| | Discharge capacity (cm ³ /min) 50/60Hz | 97/117 | 135/162 | 195/235 | 225/275 | 270/325 |
| | Motor(kW) | 0.55 | 0.75 | 0.55 | 0.75 | 0.75 |
| | Weight(Manual lift type) | 250kg(A drum is not included) | | | | |
| | Weight(Hanging type) | 70kg(A drum is not included) | | | | |
| Com mon spec ificat ion | Pump model | 1008 | 1009 | 1010 | 1011 | |
| | Discharge capacity (cm ³ /min) 50/60Hz | 335/405 | 380/460 | 425/510 | 495/595 | |
| | Motor(kW) | 1.1 | 1.1 | 1.1 | 1.1 | |
| | Weight(Manual lift type) | 250kg(A drum is not included) | | | | |
| | Weight(Hanging type) | 70kg(A drum is not included) | | | | |
| | Power | 2: AC200V 50Hz/AC220V 60Hz Three phrases | | | | |
| | | 4: AC400V 50Hz/AC440V 60Hz Three phrases | | | | |
| | Discharge pressure | Max. 20.6MPa | | | | |
| | Pump model | Double plunger type | | | | |
| | Using greast | 200Lit. Drum Less than NLGINo. 1 | | | | |
| Low level SW | AC250V Inductive load 15A | | | | | |
| Coating color | Munsell 2.5G6/2 | | | | | |

Model Selection Code



※KSPN1008~KSPN1011 does not have lubricating system DS (Dual-line・Short loop system)

広和株式会社
KOWA CORPORATION